

# Sweetwater Trails Planning

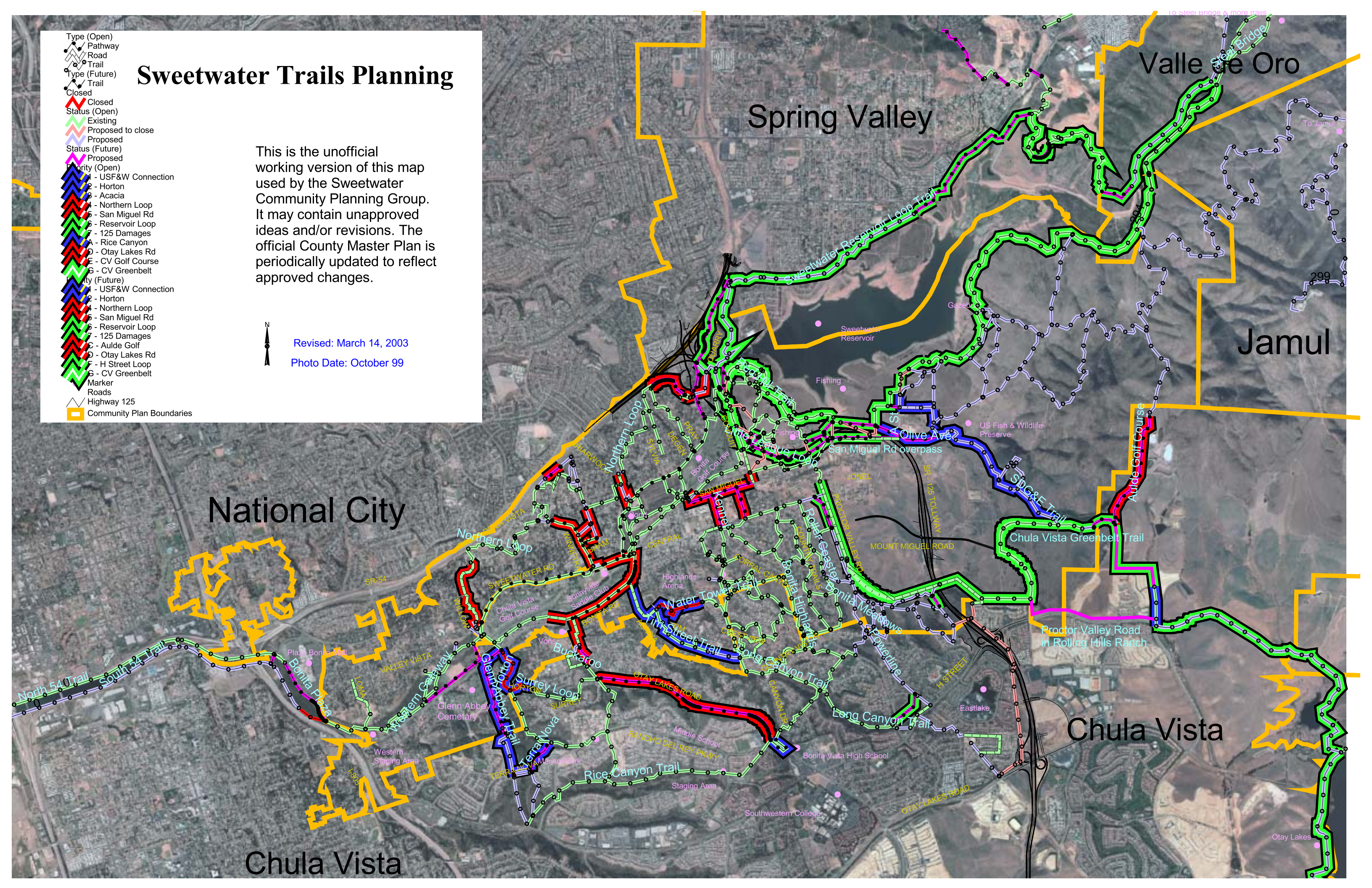
- Type (Open)
  - Pathway
  - Road
  - Trail
- Type (Future)
  - Trail
- Closed
  - Closed
- Status (Open)
  - Existing
  - Proposed to close
  - Proposed
- Status (Future)
  - Proposed
- Priority (Open)
  - 1 - USF&W Connection
  - 2 - Horton
  - 3 - Acacia
  - 4 - Northern Loop
  - 5 - San Miguel Rd
  - 6 - Reservoir Loop
  - 7 - 125 Damages
  - A - Rice Canyon
  - D - Otay Lakes Rd
  - E - CV Golf Course
  - S - CV Greenbelt
- Priority (Future)
  - 1 - USF&W Connection
  - 2 - Horton
  - 4 - Northern Loop
  - 5 - San Miguel Rd
  - 6 - Reservoir Loop
  - 7 - 125 Damages
  - C - Aulde Golf
  - D - Otay Lakes Rd
  - F - H Street Loop
  - S - CV Greenbelt
- Marker
- Roads
- Highway 125
- Community Plan Boundaries

This is the unofficial working version of this map used by the Sweetwater Community Planning Group. It may contain unapproved ideas and/or revisions. The official County Master Plan is periodically updated to reflect approved changes.



Revised: March 14, 2003

Photo Date: October 99



Spring Valley

Valle de Oro

Jamul

National City

Chula Vista

Chula Vista

Northern Loop

San Miguel Rd

San Miguel Rd overpass

Chula Vista Greenbelt Trail

Northern Loop

Water Tower Trail

Mount Miguel Road

Proctor Valley Road in Rolling Hills Ranch

Western Gateway

Buckaroo

H Street

Glenn Abbey Cemetary

Surrey Loop

Long Canyon Trail

Manisot Park

Rice Canyon Trail

Eastlake

Staging Area

Middle School

Bonita Vista High School

Southwestern College

Staging Area

Otay Lakes